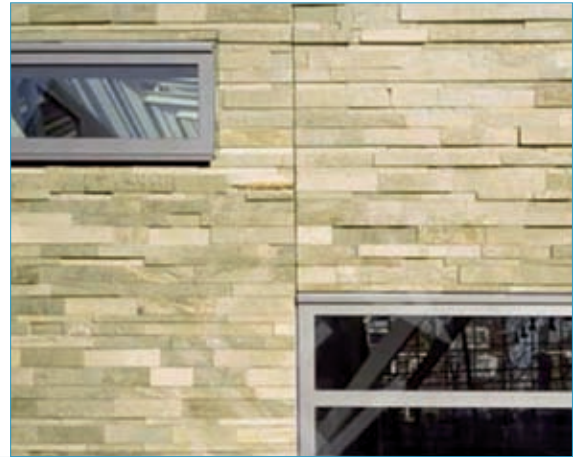




Client: Birmingham & Solihull Mental Health NHS Trust

Project: Moseley Hall Hospital



Issues: Plans to build a new mental health facility at Moseley Hall Hospital in Birmingham were progressing but faced vocal and well-organised local opposition. PPS was called in to carry out in-depth public consultation on the design and landscaping treatment of the new facility. A key part of the brief was to ensure a watertight process and minimise the risk of a legal challenge.

Strategy: PPS designed and delivered a consultation programme used newsletters, public exhibitions, questionnaires and briefings with local politicians. The audiences included local residents, wider stakeholders, the staff and service users. The process culminated in a detailed consultation report that was made publicly available.

Outcome: This programme was a success. It allowed residents, staff and service users to give their views on the detailed design of the new unit and greatly increased awareness of the Trust's work. The feedback received was used to inform the final design details of the scheme and the planning condition requiring further consultation was discharged without attracting legal challenge.

For further information: *Stephen Byfield*
T 020 7529 1700
E stephen.byfield@ppsgroup.co.uk